

Regional Scientific Forum Mid Country

Key Note Address

Dr. Keerthi M Mohotti, Acting Director

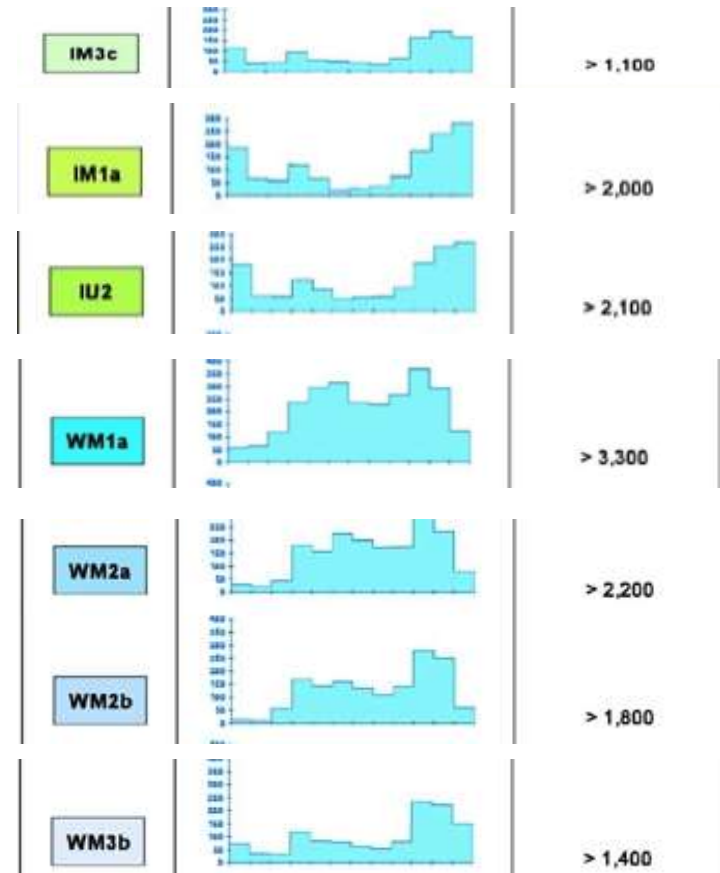
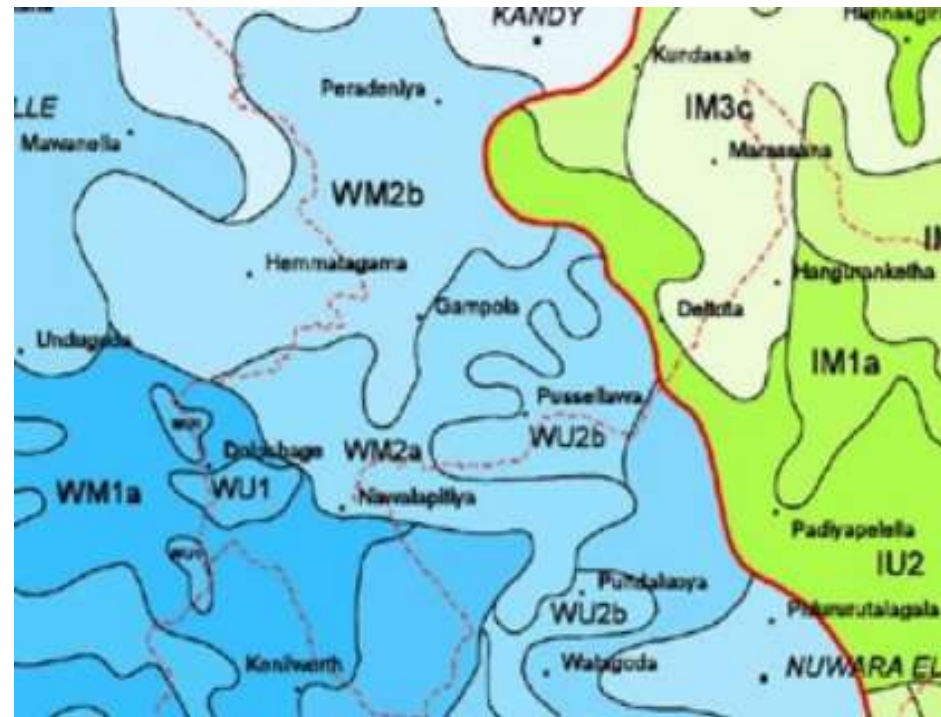
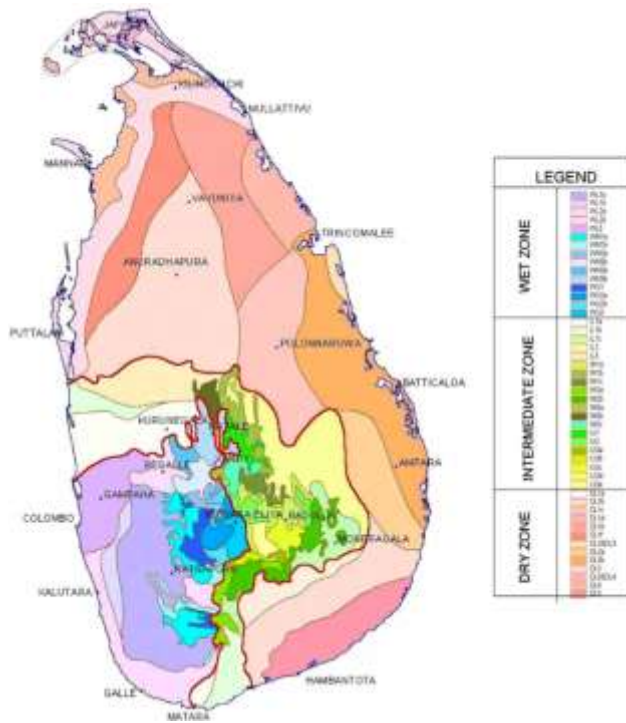
ASTI, Gannoruwa, 20 January 2023



Tea Research Institute of Sri Lanka

Agro- Climatic Regions

- IM 3c,IM1a,IU2,
- WM1a, WM2a,WM2b ,WM 3b



Region Profile of Mid Country Tea

Category		No.	Extent (ha)	Districts
State owned	SLSPC	15	4,147	Kandy, Matale
	JEDB	16	2,779	Kandy, Matale, Nuwara Eliya (Hanguranketa)
	Elkaduwa PL	06	703	Matale
RPC	Pussellawa PLC	11	2,003	Kandy, Nuwara Eliya (Hanguranketa, Kotmale)
	Kahawatte PLC	06	1,573	Kandy
	Elpitiya PLC	02	504	Kandy
	Udapussellawa PLC	02	709	Kandy
	Kegalle PLC	01	192	Kandy
	Maturata PLC	01	182	Kandy
Total		60	12,792	
Medium scale		200	2000	Kandy, Matale
Smallholdings		32,700	10,636	Kandy, Matale

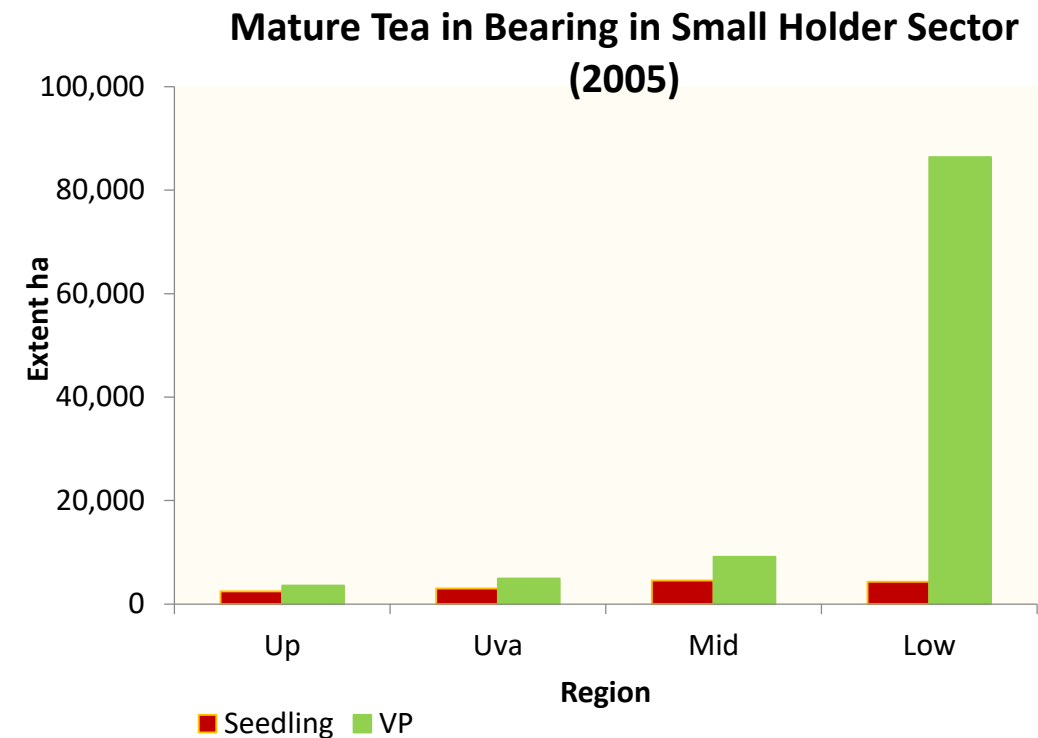
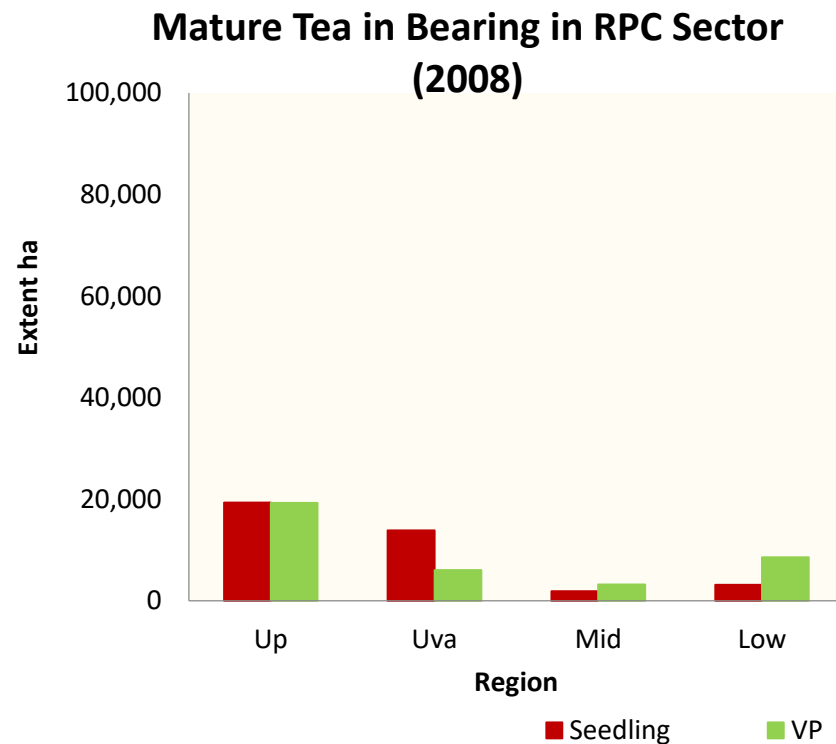


Mid Country / Mid Grown Tea

Challenges / Issues	Opportunities
Aging of plantations	Replanting and infilling with new cultivars
Degraded marginal tea lands	Organic tea
Low land productivity	Diversification, Précised tea cultivation
Changing climate and experiencing unusual weather conditions	GAPs, Climate change resilient tea
Worker migration and scarcity	Out grower / contract models, Field and factory modernization
Low and frequent fluctuations of tea prices	Green leaf quality, Value added, artesian teas, tea tourism
High COP and low producer margins	Field and factory modernization, Strategic cost management
Frequent violations in standards and product specifications / MRLs	Rational input use, record keeping for traceability



Status of RPC & Small Holding Sectors

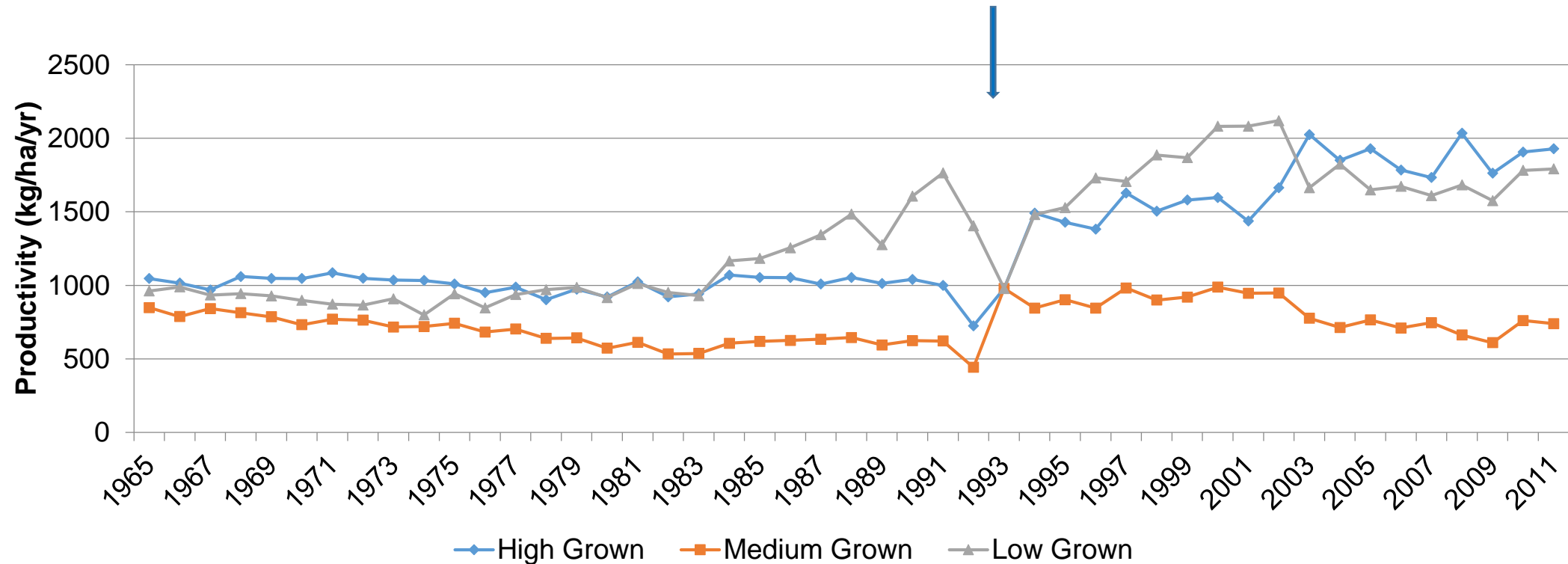


Source: Agronomic profile of corporate sector tea plantations in Sri Lanka, TRI (2011)

Mid Country	VP	SL
Extent	40 %	60 %
Average made tea yield	1200 kg/ha/year	350 kg/ha/year

Source: Tea Small Holding Development Authority, Census of Sri Lanka (2005).

Elevation-Wise Tea Productivity



Source: Statistical information on plantation crops, MPI

- **Productivity in Medium grown tea comparatively lower than high and low grown.**
- **Average replanting rate well below 1%**
- **However, the potential is immense.**

Changes in National Tea Production by Elevation – Million kg (2021 & 2022 up to October)

Elevation	2021	2022	Change	% Change
High	55.50	47.14	-8.36	-15
Medium	44.08	34.04	-10.04	-23
Low	156.58	128.76	-27.81	-18
TOTAL	256.16	209.95	-46.21	-18

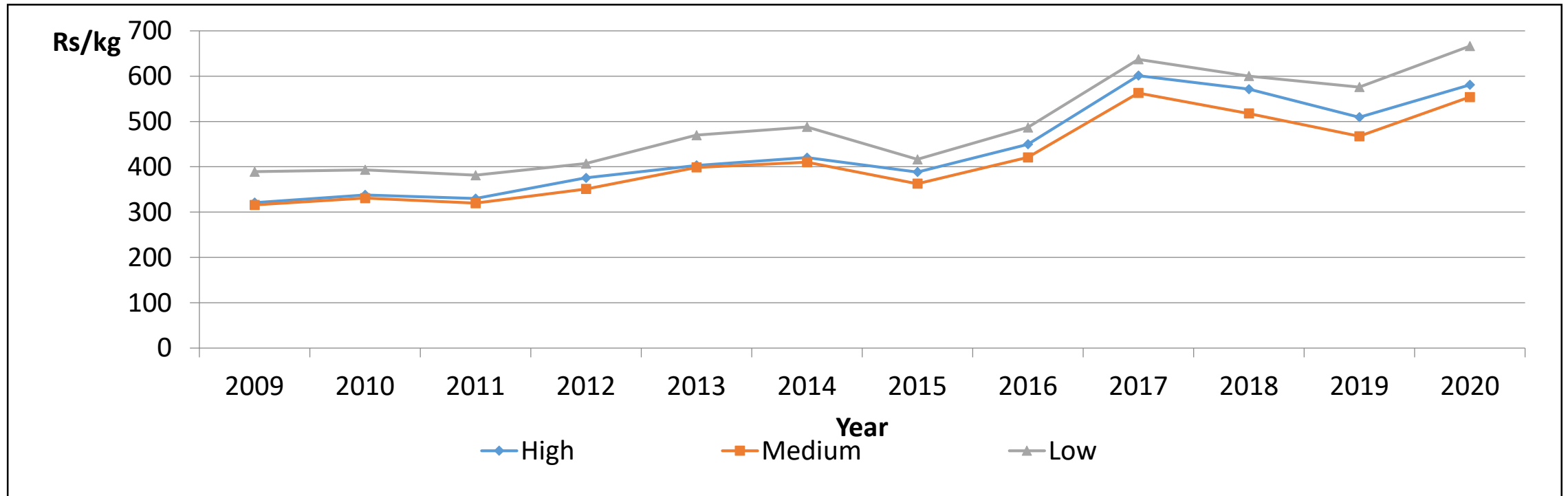
2021- 299.5 Mn Kg

2022 up to November- 331 Mn kg

Source: Statistical Bulletin, SLTB



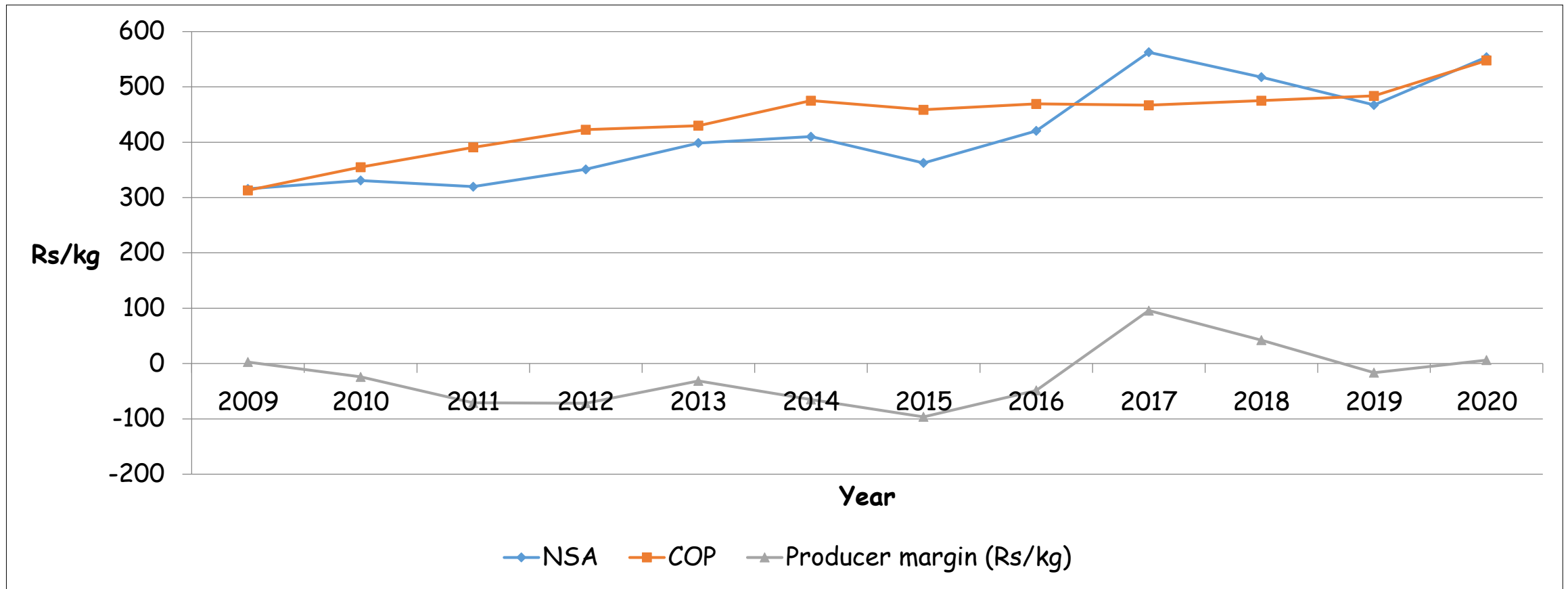
Low Tea Prices & Frequent Fluctuations



Source, Statistical Bulletin, SLTB

Average Colombo Auction prices of medium grown tea showed lower values than high and low grown.

High COP and Low Producer Margins in Mid Country Tea Lands



Source: Statistical Bulletin, SLTB, Statistical information on plantation crops, MPI

In 2020, producer margin was Rs. 6.17/kg MT

Violations in Tea Exports in Mid Country

Chemical	Type	Country	Evidence in Sri Lanka
MCPA	Weedicide	Japan	Yes
Fipronil	Insecticide	Japan	Yes
Diuron	Weedicide	Japan	Yes
Rear Earth Elements	Heavy metals	China	No; questionable
Hexaconazol	Fungicide	Japan	Yes
2-6 DIPN	Unintended chemicals	Finland, Saudi Arabia, UK	No; questionable
Tofenpyrad	Insecticide	Finland	No; questionable
Glyphosate	Weedicide	Vietnam	Yes
PAHs	Unintended chemicals	France	No; questionable
Cyhalothrin	Unintended chemicals	Germany	No; questionable
Benzopyran	Organic compound	France	No; questionable
Fenerimol	Fungicide	Saudi Arabia	No; questionable
Acetamprid	Insecticide	Saudi Arabia	No; questionable
Pentachlorophenol	Unintended chemicals	UK	No; questionable
Anthroquinone	Unintended chemicals	France	No; questionable
Nicotin	Insecticide	France	No; questionable

- Most chemicals do not have history records in the country and the detections are questionable; suspicions through extraneous usage of inputs which need further clarifications
- Thus, producers are cautioned to be away from unknown agro inputs usages

Updates on Pesticide Residue Detections

- Strict compliance to TRI recommended agro inputs.
- PU 1 Advisory Circular reissued in 2022.
- Unknown chemical detections to be curtailed.
- MCPA & Hexaconazole detections reemerged despite RA certification in progress.
- Agrochemical audits conducted on MCPA & Hexaconazole detections sought strict compliance on record keeping on own, inter estate and bought leaf transactions of green leaf for traceability.

Proceedings of RSC Mid Country: January 2023

	Presentations
1	Efficient Use of Fertilizer by Dr. Mahesh Liyanage
2	Economic Importance of Replanting and Infilling by Dr. HW Shyamali
3	Mechanization of Harvesting and Pruning by Dr. Sampath Pathirana
4	Online participation of TRISL subject specialists
5	Inputs from Dima Agribusiness





A satellite map of a tea plantation area in Sri Lanka. The map shows a dense green landscape with winding roads and several labeled locations. In the top left, 'Agra Oya' is labeled. Other labels include 'Lindula Junction', 'Belgravia Bazzar', 'Thalawakele Wine Stores', 'Divisional Hospital Lindula', 'Lamiliere Wewa', 'St. John's Church, Lindula', 'Nadi's', 'Amaya Langdale - Luxury Hotel in...', 'Radella', 'Radella Short Cut Rd', 'St. Anthony's church', 'TRI Cooperative store', 'Anglican church', 'Camellia Hostel', 'St. Coombs Estate', 'St. Coombs Estate', 'Nagaisena Watagoda', 'Agrakande Estate', 'Boc', and 'Sri Muththumariya Temple'. The 'Tea Research Institute of Sri Lanka' is marked with a red pin in the center-right area.

Thank you for your attention

Tea Research Institute of Sri Lanka

E-mail: info@tri.lk

Web : www.tri.lk